



HEINRICH RÖNNER GROUP

With joined Forces



SHIPBUILDING



STEELWORK



SERVICES



TRADE

# AGENDA

## COMPETENCES OF THE GROUP **6**

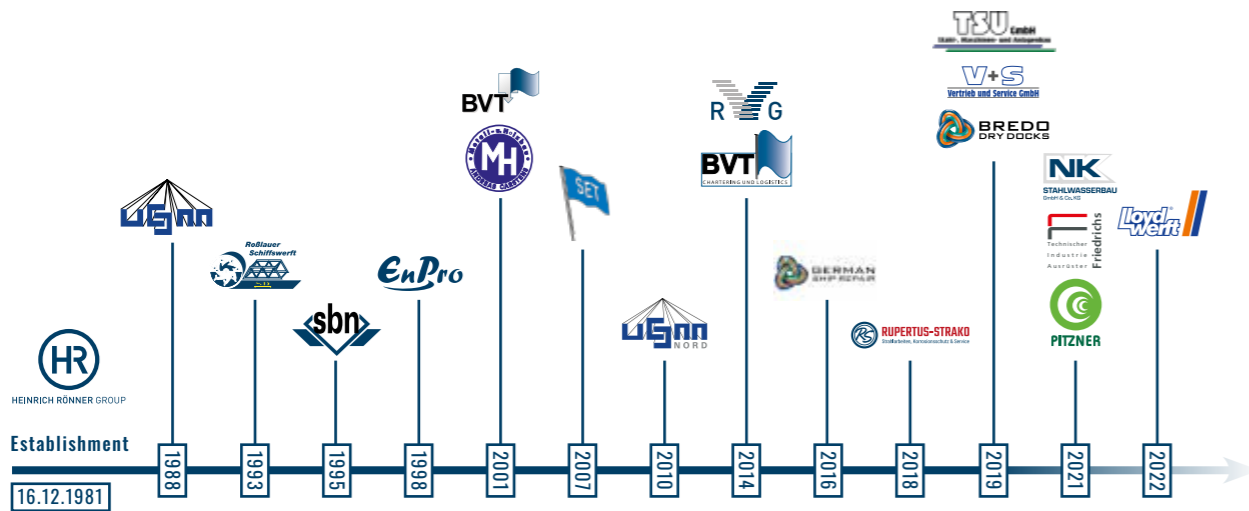
Shipbuilding	8
Steelwork	14
Services	18
Trade	22

## LOCATIONS OF THE GROUP **26**

Büdelisdorf	28
Bremerhaven (headquarters)	30
Cuxhaven	36
Bremen	38
Roßlau	40
Dessau	41
Tangermünde	42
Genthin	43

## COMPANIES OF THE GROUP **44**





“With joined forces” – true to our motto, we have been very successfully serving our customers for over 40 years. This philosophy especially means the close collaboration of all companies in our group.

Through the concentration of both production capacity and expert knowledge within our group, we are able to **safely, efficiently, punctually and affordably** complete very large projects in ship building and heavy steel construction for our customers.

The pooling of our strength together with our uniform corporate culture and our common shared values is a real benefit to our customers.

By combining a variety of skills, we are able to create enormous **versatility and flexibility** – this is unique in our field.

**STRONG TOGETHER - SUCCESSFUL TOGETHER**

**"THINK IN SOLUTIONS  
RATHER THAN  
PROBLEMS"**

- Heinrich Rönner sen.





SHIPBUILDING



STEELWORK



SERVICES



TRADE

# COMPETENCES OF THE GROUP

The HEINRICH RÖNNER GROUP offers a wide range of expertise in the areas of shipbuilding, steelwork, services and trade. This enables us to handle extensive projects from a single source.



# SHIPBUILDING

Design and construction come before building a ship.

One of the most important prerequisites to fulfil our customers preferences is the precise planning of a project to guarantee a punctual delivery to our customers. Our production lines are focused on high quality river cruise and passenger vessels, ferries, Ro/Ro vessels, sailing ships, pontoons and tugboats, as well as government and police vessels.

Other than the newbuilding of complete ships, the companies of the HEINRICH RÖNNER GROUP have specialized on the repair of ships and on ship conversions as well as building hulls for yachts and supplying and outfitting yachts and other vessels.

## COMPETENCES IN THE FIELD OF SHIPBUILDING

- Aluminium-, stainless steel- and steel construction
- Flame cutting and shaping
- Hydraulics
- Engineering services
- Interior fittings
- Corrosion protection
- Offshore
- Pontoons and fenders
- Ship and yacht equipment
- Ship newbuilding
- Ship repair
- Ship section construction
- Ship conversion
- Yacht construction

MORE ABOUT THIS FIELD OF EXPERTISE





### SAILING SHIP ALEXANDER VON HUMBOLDT II – 2011

There are very few cases of newly built sailing ships today – nonetheless, in 2010, we took on the challenge of building the three-mast barque “Alexander von Humboldt II”.

Just as its predecessor (the world renowned, old “Alex”), the new three-mast barque will serve as a youth and training vessel for sail training programs. Since 2015, the Alex II once again flies the greatly admired, iconic green sails.

The 65-meter-long, 10-meter-wide ship shell was built at our Bremen premises at Zur Westpier 40. In Bremerhaven, the tall ship was outfitted with masts, yardarms, sails and all other gear.

### MEKO A200 FRIGATES – 2020-2023

In 2019, the Egyptian Navy commissioned thyssenkrupp Marine Systems to build four 121-meter MEKO A200 frigates, which are among the most

powerful frigates of their type. The first three of the four ships were built by Stahlbau Nord GmbH in Bremerhaven.



# AN EXCERPT OF OUR SHIPBUILDING PROJECTS

## SOLARIS – 2021

SOLARIS is an expedition motor yacht with a length of 139.7 meters. This superyacht has a beam of 21.35 m, a draught of 5.95 m and a volume of 11,247 GT. A wide arch spans the light gray hull and the white superstructure, connecting the two sides of the ship. This is an "iconic element" of the yacht.



### DID YOU KNOW ...

that SOLARIS is a progression of "Le Grand Bleu" and "Luna"?



## HYBRID FERRIES FOR HAMBURG'S FERRY FLEET – 2023

Three HADAG ferries were ordered from SET in summer 2022.

The ships are well positioned in terms of environmental protection. As the first hybrid-powered ships in the HADAG fleet, they have two power supplies - one via batteries and one via a combustion engine. Depending on requirements, combustion engines or batteries will be used. It is planned that a large part of the journey will be carried out purely electrically.

The hybrid drives in particular are crucial for reducing exhaust emissions. This drive technology can reduce exhaust emissions by around 70%.

### Other advantages of the ferries at a glance:

- 33 m long (longer than previous ferries)
- Space for up to 250 passengers
- Shortened frequency from 15 to 10 minutes
- Optimized boarding area for increasing passenger numbers

# STEELWORK

Our cross-sector orientation makes it possible to deliver ready to use, single-provider equipment and systems with the highest possible amount of practical orientation. The HEINRICH RÖNNER GROUP does not only produce specialized steel products, but also general steel products.

The production capacities also include the processing of chromium-nickel materials, as used in the fish and food industry. All works include the preparation of shop drawings.

## COMPETENCES IN THE FIELD OF STEELWORK

- Aluminium- and stainless steel construction
- Flame cutting and shaping
- Bridge construction
- Large pipe machining
- Port maintenance
- Hydraulics
- Engineering services
- Industrial plant construction
- Corrosion protection
- crane construction
- Mechanical engineering
- Modular accommodation
- Offshore
- Lock gate construction
- Sea mark construction
- Structural steelwork
- Hydraulic steel construction



MORE ABOUT THIS FIELD OF EXPERTISE





### FLOOD GATE MAINTENANCE – 2018

NK Stahlwasserbau has been carrying out basic repairs on three lock gates on the Kiel Canal since 2018. The scope of the basic repairs includes repairs to the steel structure and plant technology, the renewal of the corrosion protection and electrics as well as the processing and renewal of PE sealing strips and protective timbers. A special feature here was the repair of the "Akacia" lock gate, which was split in two due to an accident in 2018 and had to be re-assembled as part of the repair work. The lock gates weigh between 1,000 and 1,400 tons and are transported by water to the processing site for processing.



### LNG TANKS – 2019

LNG (natural gas liquefied by means of cooling) is held to be fuel of the future for the shipping industry. Compared to conventional fuels (HFO, MDO), LNG leads to considerably less pollutants and is understood to be especially environmentally friendly. As LNG is stored at negative 160 degrees centigrade, the construction of LNG-reservoirs presents a number of challenges concerning the construction and materials used. Our specially trained staff build LNG-reservoirs for ship newbuildings and conversions based on our customers' requirements.



### SUBSTATION PLATFORM - OFFSHORE-WINDPARK „NORDERGRÜNDE“ – 2017

In 2017, Stahlbau Nord and BVT Bremen built the steel construction for the substation platform of the offshore wind farm "Nordergründe", which is 15 kilometers east of Wangerooge island in the Weser Delta.

The offshore wind farm "Nordergründe" consists of 18 wind turbines with an energy production of 6.15 MW per unit.

Due to the limited depth of the water at the site of the offshore wind farm of only two to ten meters, the pictured platform was built upon a monopile foundation piece.



### DISMANTLING/ASSEMBLY OF THE STEEL SUPERSTRUCTURE OF THE LESSERSTRASSE LEVEL CROSSING – 2023



Roßlauer Schiffswerft carried out dismantling and assembly work at the Wandsbek-Gartenstadt subway station in Hamburg. Two old steel bridges were excavated and a new steel trough bridge was lifted into place.

# AN EXCERPT OF OUR STEELWORK PROJECTS



# SERVICES

The HEINRICH RÖNNER GROUP offers a wide range of highly qualified services, which the company has continuously built up since its foundation in 1982 and which are characterized by quality and experience. As a renowned company in the maritime industry, the services range from the main business areas of shipbuilding and

steel construction to complex transportation projects with the company's own maritime fleet and small-scale material testing. With its presence on the international market, the group of companies thus provides services that are of great importance not only for Bremerhaven, but for the entire maritime industry.

## OUR SERVICES

- Refurbishment of old buildings
- Fire protection
- Elektrical engineering
- Fendering
- Window and door construction
- Port goods turnover
- Hydraulics
- Industrial services
- Engineering services
- Interior fittings
- Corrosion protection
- Transportation logistics
- UVV inspection
- Non-destructive material testing
- Flushing of fuel, oil and water pipes

MORE ABOUT THIS FIELD OF EXPERTISE





**CRACK TESTING ON CONTAINER GANTRY CRANES  
WITH V+S VERTRIEB UND SERVICE**

The method is used for the visual detection of material separations open to the surface (e.g. cracks and pores) and is mainly used for testing welded joints, castings and mass productions and turbine components (usually metals, but also plastics and ceramics).

**WATER JET CUTTING  
WITH PITZNER**

The extremely thin water jet cuts steel, stainless steel, aluminum, titanium, glass, marble, ceramics, wood, plastics, sealing materials, elastomers and many other materials up to a format of 2000 mm x 4000 mm and a thickness of approx. 100 mm with a pressure of 3800 bar. Even voluminous and soft foams, e.g. for case linings, can be cut precisely up to a thickness of approx. 200 mm.



**TRANSPORTATION OF A SHIP SECTION  
WITH BVT CHARTERING UND LOGISTICS**

Our many years of experience in transportation and in the development of ship systems guarantee customer-optimized solutions for a wide variety of goods. Whether transporting rotor blades, barrier gates or maneuver assistance work: our fleet is versatile - on land and at sea.



**CORROSION PROTECTION ON A SHIP  
WITH RUPERTUS-STRAKO**

Wherever steel is used, the damage caused by corrosion is immense. Corrosion protection tailored to the respective local conditions and circumstances ensures a long protection period.

**AN EXCERPT OF OUR  
SERVICES**

# TRADE

Through the close collaboration within the HEINRICH RÖNNER GROUP, we offer single-provider solutions from construction through to production to transport and assembly. This also includes our specialist shops for work and leisure wear, industrial needs and more.

Our large product range guarantees quick response times and high delivery capabilities in the individual

areas. We supply our customers with high-quality products and offer expert advice in the field of industrial applications.

We are dedicated to finding customer solutions and it is our daily motivation to meet our customers' demands.

To us, customer satisfaction is the starting point for a fruitful and long-term partnership.

## OUR PRODUCTS

- Drive technology
- Protective clothing
- Fittings
- Workwear
- Factory equipment
- Fire protection
- Chemical products
- Sealants and fasteners
- Leisurewear
- Industrial hoses
- Small machines, tools
- On- and offshore equipment
- Pneumatics
- Pumps
- Ship equipment
- Lubricants
- Welding supplies
- Cutting and abrasive materials
- Water jet cutting

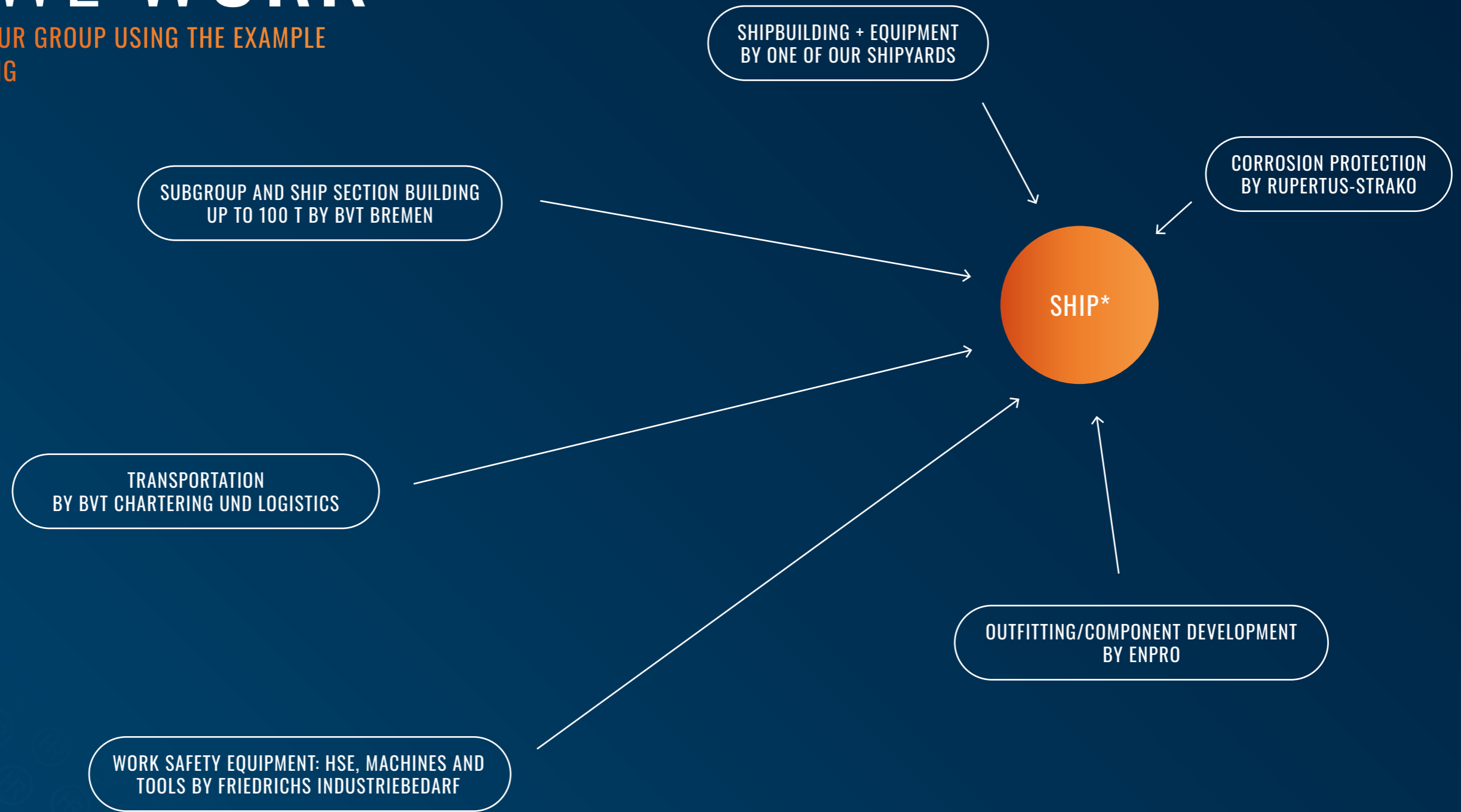


MORE ABOUT THIS FIELD OF EXPERTISE



# HOW WE WORK

THE SYNERGIES OF OUR GROUP USING THE EXAMPLE OF SHIP NEWBUILDING



From planning to final handover - as a group of companies, we do all this and more. Our synergies are similar not only in new construction, but also in repairs, for example.

\*Various constellations are possible on customer request.

# LOCATIONS OF THE GROUP

The HEINRICH RÖNNER GROUP can currently be found at 7 different locations in Germany.

Various halls, extensive equipment, direct connections to the North Sea, various inland waterways, highways, seaports and rail connections offer customers various advantages.



• Büdelsdorf

• Cuxhaven

• Bremerhaven

• Bremen

• Tangermünde

• Genthin

• Dessau-Roßlau

# BÜDELSDORF

At the Büdelsdorf site near Rendsburg, we realize projects in the fields of steel, hydraulic steel and bridge construction with 25 employees. With effect from 01.01.2022, the HEINRICH RÖNNER GROUP acquired the assets of the steel construction department of the Nobiskrug shipyard from the insolvency estate of Nobiskrug GmbH. The company's name has been changed to "NK Stahlwasserbau GmbH & Co. KG".

## LOCATION DATA

- Site area: 4000 m<sup>2</sup>
- Office area: 600 m<sup>2</sup>
- Storage area: 600 m<sup>2</sup>

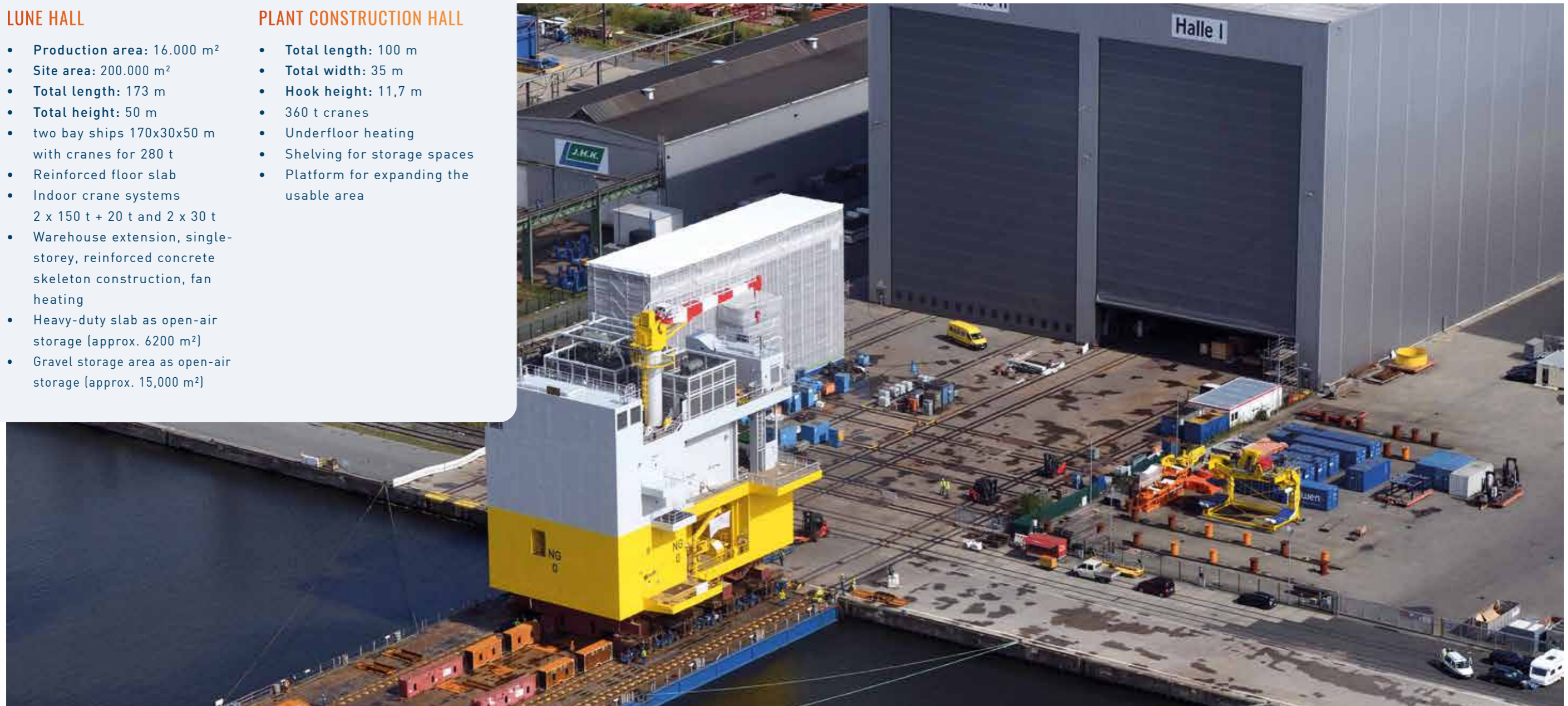


**LUNE HALL**

- Production area: 16.000 m<sup>2</sup>
- Site area: 200.000 m<sup>2</sup>
- Total length: 173 m
- Total height: 50 m
- two bay ships 170x30x50 m with cranes for 280 t
- Reinforced floor slab
- Indoor crane systems 2 x 150 t + 20 t and 2 x 30 t
- Warehouse extension, single-storey, reinforced concrete skeleton construction, fan heating
- Heavy-duty slab as open-air storage (approx. 6200 m<sup>2</sup>)
- Gravel storage area as open-air storage (approx. 15,000 m<sup>2</sup>)

**PLANT CONSTRUCTION HALL**

- Total length: 100 m
- Total width: 35 m
- Hook height: 11,7 m
- 360 t cranes
- Underfloor heating
- Shelving for storage spaces
- Platform for expanding the usable area



# BREMERHAVEN

We currently have 15 operating and production facilities at our main site in Bremerhaven.

On the following pages we present some of our

Bremerhaven highlights, consisting of our Lune-hall, our fleet and our docks.

With our locations in the group of companies, we realize major projects in the shipbuilding, plant construction and offshore wind sector. With our pontoon BHV Innovation, we are able to bring ships into and out of the water with our own equipment in order to carry out repairs and conversions in the hall and to deliver large blocks to the customer in

a pre-equipped condition. In addition to steel construction, we also offer steel and mechanical engineering equipment, pipe construction and electrical engineering on our premises. We coordinate other trades in the overall process through to completion.



# BREMERHAVEN

## OUR FLEET



### HEAVY LOAD PONTOON "BHV INNOVATION"

This modern heavylift barge with 17 ballast tanks is, in particular, suitable for transporting foundation structure and large components of offshore wind energy installations. It has a smooth main deck with an integrated rail system as well as a special coupling system for docking against the pier. This means that loading and discharging is possible using electro-hydraulic rail-driven vehicles.

Beyond this, loading large components is also possible using Self-Propelled Modular Transporters (SPMTs) and cranes. To permit swift seafastening, the barge has a system for heavylift cargo lashing fasteners which is integrated into its deck. The barge has two redundant electro-diesel generators which, independent of each other, can power the ballasting pumps. In 2021, the pontoon acquired diving capability.

### HEAVY LOAD PONTOON "BHV SOLUTION"

The modern heavy-load pontoon with 13 ballast tanks is built for RoRo operation by SPMT. Especially huge components can be loaded easily. An integrated coupling system with two stabilizing pontoons (15m x 10m) can be used for easy loading.

The pontoon is equipped with an integrated heavyload socket for a quick lashing. The pontoon has two redundant diesel-electric generators, both fully independent and each with the ability to power the two ballast pumps. The pontoon is equipped with a remote controlled valve, tank level and draft measurement system.



### FLOATING CRANE "BHV ATHLET"

The floating crane can lift, transport by water and precisely place loads weighing up to 100 tons.

Primarily between Bremen and Bremerhaven, the crane can be deployed along the Weser and could – more flexibly than any land-based crane – transload any kind of heavylift cargo or high and heavy cargo. Thanks to it being operable from the water, landside berths are not required.

The lifted cargo can be deposited on the onboard loading area for longer journeys and can be deposited securely at the desired location.

### FLOATING CRANE "BHV HERCULES"

The floating crane can lift loads up to 80 mt, transport them on water and precisely position them. The crane is primarily employed in Bremerhaven but also with tug assistance along inland waters and is more flexible than mobile or port cranes in the handling of heavy and/or oversized cargo. Due to the floating cranes, waterside operations do not stain the quay. On the cranes' cargo, loads can be stowed and transported over longer distances before safely being offloaded at their destination.



# BREMERHAVEN

## OUR DOCKS



### PORT "FISCHEREIHAFEN"

#### D1 – FLOATING DOCK 1 3.800 t

Width	19.00 m
Length	104.00 m
Water depth above keel blocks	4.80 m
Crane (2)	7.00 t/12.00 m

#### D3 – FLOATING DOCK 3 7.500 t

Width	23.90 m
Length	158.00 m
Water depth above keel blocks	6.20 m
Cranes (2)	7.50 t/12.00 m - 5.00 t/20.00 m

#### D2 – FLOATING DOCK 2 4.500 t

Width	21.30 m
Length	100.00 m
Water depth above keel blocks	4.70 m
Crane (1)	4.50 t/15.00 m - 2.50 t/23.00 m

#### D4 – FLOATING DOCK 4 12.000 t

Width	29.00 m
Length	170.00 m
Water depth above keel blocks	6.00 m
Cranes (2)	10.00 t/10.00 m - 5.00t/30.00 m

### PORT "KAISERHAFEN"

#### KD I (KAISERDOCK 1) – DRY DOCK

Width of the lower entrance	26.00 m
Width of the upper entrance	32.00 m
Length	222.00 m
Water depth above keel blocks	9.30 m
Bridge crane	35.00 t/13.00 m - 5 t/45.00 m

#### D3 – FLOATING DOCK

Width	38.00 m
Length	281.00 m
Water depth above keel blocks	6.50 m
Bridge crane	60 t/17.6 m - 27 t/37.50 m
	15.00 t/21.00 m
	10.00 t/14.00 m - 7.50 t/21.70 m
	15.00 t/14.00 m - 12.00 t/21.70 m

#### KD II (KAISERDOCK 2) – DRY DOCK

Width of the lower entrance	35.00 m
Width of the upper entrance	40.00 m
Length	335.00 m
Water depth above keel blocks	11.00 m
Bridge crane	50 t/31.00 m - 20 t/60.00 m
	and 35 t/13.00 m - 8 t/45.00 m

#### D6 – FLOATING DOCK 8 7.200 t

Width	21.00 m
Length	147.00 m
Water depth above keel blocks	6.50 m
Crane	10.0 t





DID YOU KNOW ...

that the optimal location of the docks directly on the North Sea ensures smooth and fast arrival and departure of the ships? We currently record more than 250 dockings per year.

# CUXHAVEN

## OUR DOCKS

### PORT "AMERIKAHAFEN"

**D7** – FLOATING DOCK 7 7000 t

Width 22.80 m  
 Length 125.00 m  
 Water depth above keel blocks 6.00 m  
 Cranes 5.00 t/13.50 m - 3.00 t/21.00 m

**D8** – FLOATING DOCK 8 1000 t

Width 14.90 m  
 Length 75.00 m  
 Water depth above keel blocks 4.00 m  
 Cranes 8.00 t/14.00 m - 5.00 t/20.00 m  
 Roofing 66.50 m x 17.50 m

**JACK-UP BERTH**

Length 170.00 m





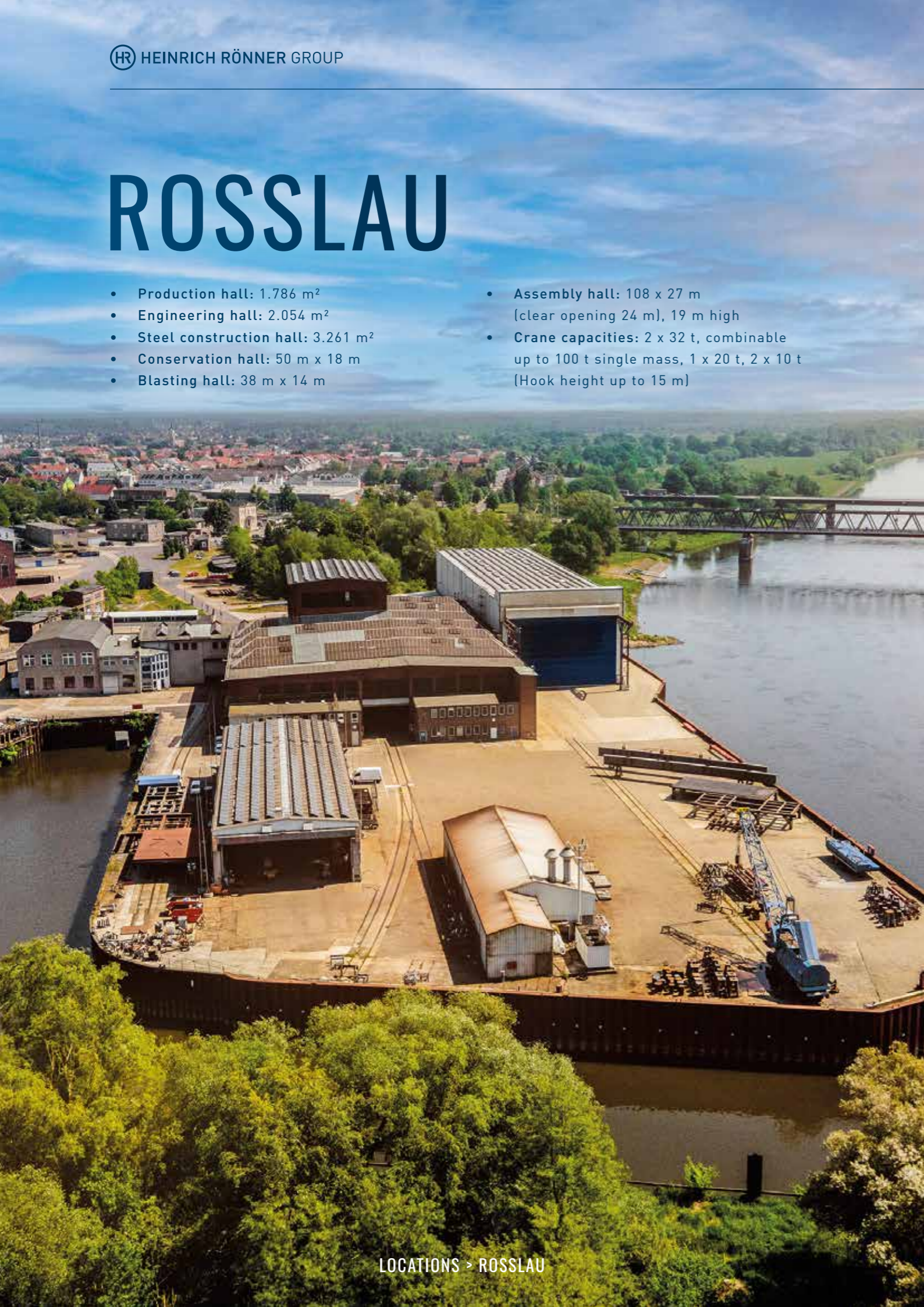
## PRODUCTION CAPACITIES AND TECHNICAL EQUIPMENT

- **Total production area:** approx. 28.000 m<sup>2</sup>
- **Production hall:** Length: approx. 450 m/  
Width: approx. 64m
- **ZAW Hall:** Length: approx. 55,5m/  
Width: approx. 40,5m
- **Crane capacities:** 150 t unit weight
- **Hook height (max.):** 28 m
- **RoRo shipping** > 1000 t
- **Extensive machinery**
- **various flame cutting machines**

# BREMEN

# ROSSLAU

- Production hall: 1.786 m<sup>2</sup>
- Engineering hall: 2.054 m<sup>2</sup>
- Steel construction hall: 3.261 m<sup>2</sup>
- Conservation hall: 50 m x 18 m
- Blasting hall: 38 m x 14 m
- Assembly hall: 108 x 27 m (clear opening 24 m), 19 m high
- Crane capacities: 2 x 32 t, combinable up to 100 t single mass, 1 x 20 t, 2 x 10 t (Hook height up to 15 m)



# DESSAU



## PRODUCTION CAPACITIES AND TECHNICAL EQUIPMENT

**Production hall Dessau 1:**  
1582 m<sup>2</sup> + 1602 m<sup>2</sup> (2 ships)

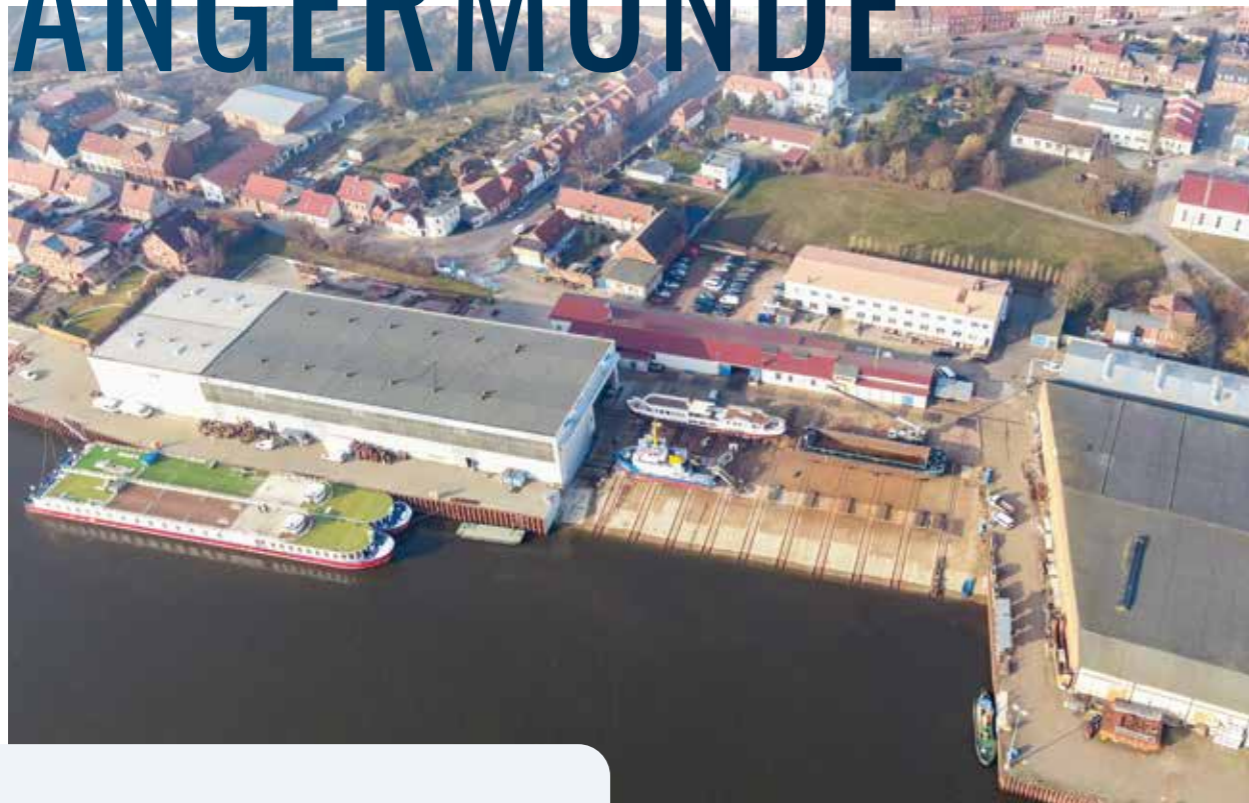
**Production hall Dessau 2-5:**  
1444 m<sup>2</sup> up to 2240 m<sup>2</sup>

**Conservation hall:**  
30 m x 9 m

**Blasting hall:**  
30 m x 9 m

**Crane capacities:**  
4 x 32 / 8 t (max. individual mass 64 t);  
1 x 32 / 8 t  
1 x 20 / 5 t (max. individual mass 52 t);  
1 x 12 t Material delivery - Iron store

# TANGERMÜNDE

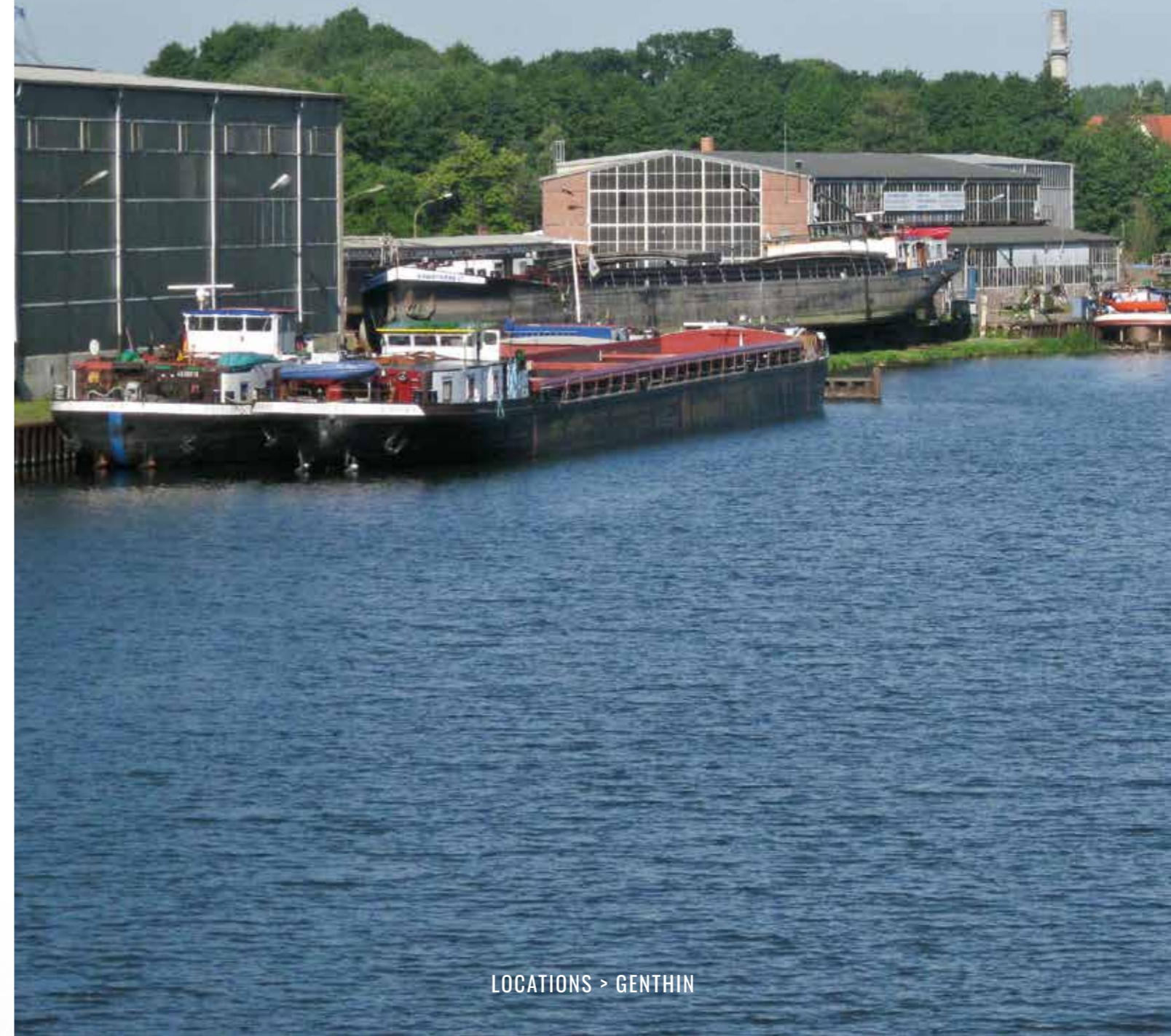


## PRODUCTION CAPACITIES AND TECHNICAL EQUIPMENT

- Operating area: 17.300 m<sup>2</sup>
- Shipbuilding halls: 120 m x 30 m x 15 m
- Combined work hall
- Hall cranes: 4 x 25 t, 1 x 5 t
- Car crane 30 t
- 4-layer hydraulic transverse and longitudinal slipway
- Ships up to 85 m in length and up to 1,000 t total weight

# GENTHIN

- Operating area: 32.000 m<sup>2</sup>
- Shipbuilding hall: 75 m x 25 m x 12 m
- Hall cranes 2 x 8 t
- Shipbuilding hall (Aluminium): 70 m x 20 m x 10 m
- Hall crane 8 t
- Machine construction hall / mechanical machining: 45 m x 30 m x 10 m
- Hall crane 5 t
- Pier: Length 350 m / Water depth 3 m



# COMPANIES OF THE GROUP

The **HEINRICH RÖNNER GROUP** currently comprises 20 operating and production sites. The many different areas of expertise make the group an all-round talent, with just one contact partner for all project steps, guaranteeing a smooth process.

# COMPANIES OF THE GROUP



**Arthur Friedrichs Industriebedarf GmbH**  
Herwigstraße 44 & Riedemannstraße 5  
27572 Bremerhaven

+49 (0) 471 97395-0  
info@afi-bhv.de  
www.afi-bhv.de



**Roßlauer Schiffswerft GmbH & Co. KG**  
Werftstr. 4  
06862 Dessau-Roßlau

+49 (0) 34901 94-0  
mail@rsw-stahlbau.de  
www.rsw-stahlbau.de



**BREDO DRY DOCKS GmbH**  
Dockstr. 19  
27572 Bremerhaven

+49 (0) 471 7997-10  
info@bredode.de  
www.bredode.de



**Rupertus-Strako GmbH**  
Grönlandstraße 3  
27572 Bremerhaven

+49 (0) 471 94 710-1  
info@rupertus-strako.de  
www.rupertus-strako.de



**BVT Bremen GmbH & Co. KG**  
Zur Westpier 40  
28755 Bremen

+49 421 620098 -0  
bvt@bvt-bremen.de  
www.bvt-bremen.de



**Rönner Verwaltungsgesellschaft mbH**  
Am Lunedeich 156  
27572 Bremerhaven

+49 (0) 471 80960 900  
kontakt@hr-gruppe.de  
www.hr-gruppe.de



**BVT Chartering und Logistics GmbH**  
Kühlhauskai 3  
27572 Bremerhaven

+49 (0) 471 30 01 30-0  
project@bvt-chartering.de  
www.bvt-chartering.de



**Stahlbau Nord GmbH**  
Am Lunedeich 156  
27572 Bremerhaven

+49 (0) 471 97 39 8-0  
sbn@sbn-bhv.de  
www.sbn-bhv.de



**EnPro Engineering- und Produktionsgesellschaft mbH**  
Neufundlandstraße 2  
27572 Bremerhaven

+49 (0) 471 98 40 6-0  
enpro@enpro-bhv.de  
www.enpro-bhv.de



**SET Schiffbau- u. Entwicklungsgesellschaft Tangermünde mbH**  
Carlbaße 7b  
39590 Tangermünde

+49 (0) 39322 99 30  
mail@set-schiffbau.de  
www.set-schiffbau.de



**German Ship Repair GmbH**  
Dockstr. 19  
27572 Bremerhaven

+49 (0) 471 30 01 30-0  
info@germanshiprepair.com  
www.germanshiprepair.com



**TSU GmbH**  
Kleiner Westring 19  
27572 Bremerhaven

+49 (0) 471 93 23 8-20  
info@tsu-gmbh.de  
www.tsu-gmbh.de



**Lloyd Werft Bremerhaven GmbH**  
Brückenstraße 25  
27568 Bremerhaven

+49 (0) 471 478-0  
info@lloydwerft.com  
www.lloydwerft.com



**Unterweser Stahl- und Maschinenbau GmbH**  
Am Lunedeich 143  
27572 Bremerhaven

+49 (0) 471 97 94 8-0  
usm@usm-bhv.de  
www.usm-bhv.de



**Metall- u. Holzbau Andreas Carstens GmbH & Co. KG**  
Großer Westring 11  
27572 Bremerhaven

+49 (0) 471 97 39 0-0  
kontakt@muh-bhv.de  
www.metall-und-holzbau.de



**USM-Nord Unterweser Schiff- und Maschinenbau GmbH**  
Lohmannstr. 62  
27568 Bremerhaven

+49 (0) 471 48 02-0  
usm@usm-nord.de  
www.usm-nord.de



**NK Stahlwasserbau GmbH & Co. KG**  
Fehmarnstraße 22  
24782 Büdelsdorf

+49 (0) 471 80960 211  
info@nk-swb.de  
www.nk-stahlwasserbau.de



**V + S Vertrieb und Service GmbH**  
Kleiner Westring 19  
27572 Bremerhaven

+49 (0) 471 93 23 8-20  
info@vertrieb-service.com  
www.vertrieb-service.com



**Pitzner Industrieservice GmbH & Co. KG**  
Weidestraße 8-10  
27570 Bremerhaven

+49 (0) 471 30852-0  
info@pitzner.de  
www.pitzner.de



## CONTACT

### HEINRICH RÖNNER GROUP

Am Lundedich 156  
27572 Bremerhaven  
Germany

 +49 (0)471 80960 900

 [kontakt@hr-gruppe.de](mailto:kontakt@hr-gruppe.de)

 [www.hr-gruppe.de](http://www.hr-gruppe.de)

